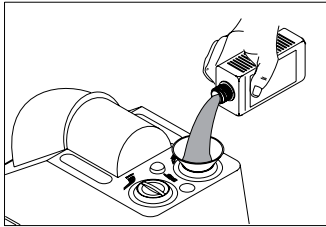




assistina

Weekly checklist

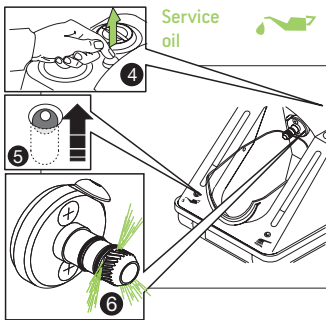
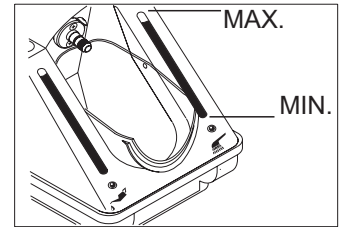


**Check liquid level!
Refill if necessary!**

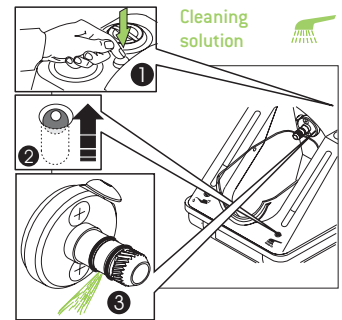
Service oil:
500 ml – 02675930

Cleaning solution:
1000 ml – 02680230

Set 02680500:
1000 ml Cleaning solution and 500 ml Service Oil

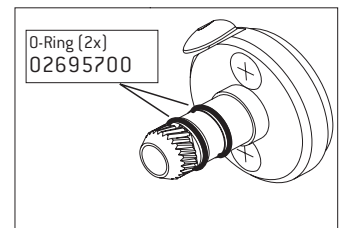
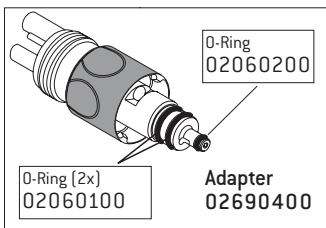


Check function!



Check o-rings!

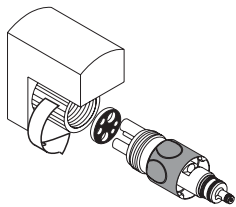
**Look for right position
and / or
damage!**



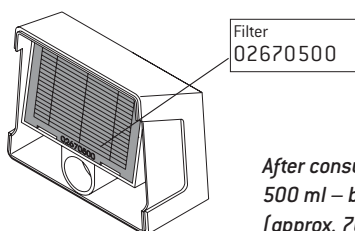
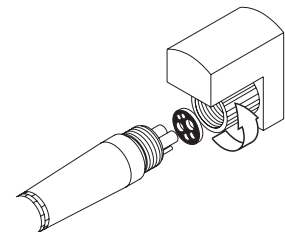
General hints



*When maintaining after every patient – Press program button once!
When maintaining twice a day – Press program button twice!*

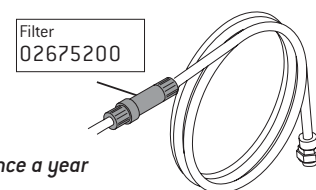


Check connection is tight!



*After consumption of one
500 ml – bottle of Service oil
[approx. 7000 cycles]*

Changing of filters!



Once a year